

# Department of Population and Quantitative Health Sciences

## Weekly Newsletter

OCTOBER 20 - 24, 2025



UMass Chan  
MEDICAL SCHOOL

## UPCOMING EVENTS

### Thanksgiving Feast

**Only 9 responses so far...** please .👉 [Click here](#) to let us know which dates work best for you.

Hello everyone, We're thinking about bringing back a beloved PQHS tradition — a **Thanksgiving potluck lunch!** Before we start planning, we'd love your input on timing. We're considering holding the feast sometime **between November 12 and 19**. If there's interest but the timing doesn't work out, we'll shift gears and plan a **holiday potluck in December** instead. We hope to celebrate together soon — your feedback will help us decide!

Warmly, *The PQHS Admin Team*

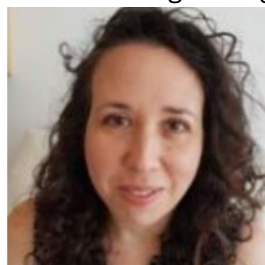


Pictures from the 2019 Feast

**Monday, November 10, 2025, 1:00-2:15 PM**

### Gerontology Speaker Series

**Title:** Growing old together: Connections and perceptions



**Speaker:** Dikla Segel-Karpas, PhD, Chair, Department of Gerontology, University of Haifa

**Abstract:** Aging is not only a biological process but also a deeply social one. Our relationships across the life course shape how we age, affecting physical and mental health as well as the ways we think about and experience aging itself. This presentation will review evidence on the role of social connections in later life, highlighting their impact on cognitive functioning, physical health, emotional well-being, and subjective views of aging. I will then turn to the couple as a central context of aging, examining how older romantic partners influence each other's aging process. Beyond the couple, I will consider intergenerational relationships with

adult children and their significance for both parents and children. The talk will conclude with discussion of ongoing and future research aimed at advancing theoretical and empirical tools to better understand how our closest relationships, including spousal and intergenerational relationships, shape the process of growing old.

In-person (Gerontology Classroom, Wheatley Hall 3rd Floor, Room 125) and via Zoom: via

Zoom: <https://umassboston.zoom.us/j/94175483404> Password: Boston

### Sponsored by:

University of Massachusetts Boston

Department of Gerontology and Gerontology Institute

Donna M. and Robert J. Manning College of Nursing & Health Sciences &

University of Massachusetts Medical School

Department of Population Health and Quantitative Health Sciences

For more information contact Qian Song: [Qian.Song@umb.edu](mailto:Qian.Song@umb.edu)

Interested in learning more about gambling? Mark your calendars and register now for these upcoming trainings hosted in collaboration with the RI Council on Problem Gambling.

**Wednesday, November 12, 2025, 1:00-2:30 PM**

Register: [The Intersection of Gambling and Domestic Violence: Empowering Survivors](#)

Join consultant Kristen Beall for a critical training on the intersection of gambling disorder and domestic violence. This session examines how economic abuse and coercive control create a dangerous connection. You will learn evidence-based approaches for identifying financial coercion, concrete strategies for supporting survivors' path to safety, and practical intervention techniques you can implement immediately.

**Wednesday, December 10, 2025, 1:00-2:30 PM**

Register: [Gambling Disorder: Relationship to Suicide and Resources for Help](#)

Kristen Beall is offering a second training on a critical topic: Gambling disorder, which is recognized by the American Psychiatric Association as a behavioral addiction with the highest rate of suicide risk. This session provides crucial information on identifying warning signs using DSM-5 criteria, understanding co-occurring disorders, and initiating life-saving conversations. Leave equipped with essential resources and mitigation strategies to address this public health concern in your community.

**Tuesday, December 16, 2025, 1:00-2:30 PM**

Register: [Impact of the Games We Play](#)

Ted Hartwell is back to the impact of the games we play. Digital gaming has become one of the most dominant forms of entertainment worldwide—surpassing the movie and music industries combined. But with growing popularity comes growing concern. This training explores the line between healthy and problematic gaming, highlighting features in video games and social media that can quickly lead to harm, especially among younger users. Participants will gain insight into how gaming and gambling behaviors intersect, learn to identify warning signs, and discover practical resources to address gaming-related harms.

Please feel free to share this with anyone who may be interested. We hope to see you there! Keep checking our [website](#) and our [LinkedIn](#) page for updates!

The New England ATTC Team

New England ATTC  
Population and Quantitative Health Sciences  
UMass Chan Medical School  
New England ATTC - Addiction Technology Transfer Center (ATTC) Network  
[NewEnglandATTC@umassmed.edu](mailto:NewEnglandATTC@umassmed.edu)

**FYI**

**Every Tuesday thru November 4, 10 AM – 2 PM**

**Farmers' Market, CSA, and Food Trucks at UMass Chan**



Sponsored by Office of Well-Being and Office of Sustainability

**Location: Outdoors, Medical School Building Terrace** (Rain location: Old School Lobby or Albert Sherman Cafeteria)

In an effort to enhance campus sustainability, foster **engagement**, and promote well-being, we are proud to provide fresh, locally sourced food and products to our UMass Chan community and support small, local businesses in the region.

A variety of food trucks will be available each week offering food for purchase.

**Questions?** Email [OWB@umassmed.edu](mailto:OWB@umassmed.edu).

# HOLIDAY SCHEDULE

## Remaining Holiday Schedule for 2025:

- Veterans Day – Tuesday, November 11<sup>th</sup>
- Thanksgiving Day – Thursday, November 27<sup>th</sup>
- Day After Thanksgiving – Friday, November 28<sup>th</sup>
- Christmas Eve – Wednesday, December 24<sup>th</sup>
- Christmas Day – Thursday, December 25<sup>th</sup>

*PQHS Weekly will be sent to all members of PQHS on Monday mornings. The intent is to provide a snapshot of what is going on that week in PQHS and to share our faculty and staff activities with the department. We depend on you to provide the items we need to share. Please send suggestions of events, faculty invited seminars & talks, honors, student thesis presentations, and news – new babies born! – to Judi ([judi.saber@umassmed.edu](mailto:judi.saber@umassmed.edu)) & Sarah ([sarah.yeboah@umassmed.edu](mailto:sarah.yeboah@umassmed.edu)) by Friday each week.*